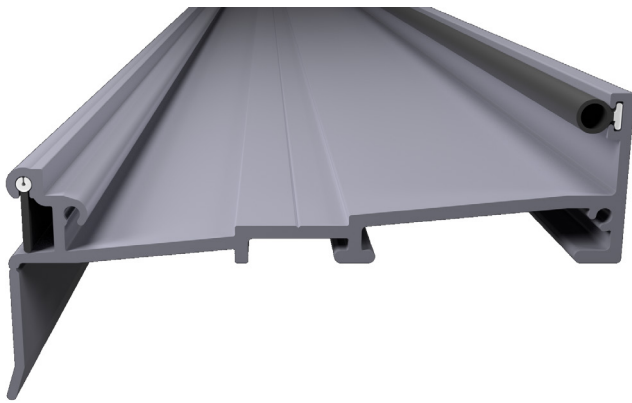


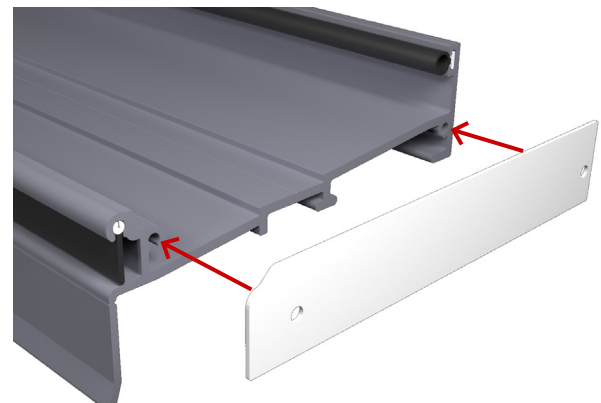
# SS20 SLOPING SUBSILL

## Premium 113mm Subsill

Concept Architectural Systems is proud to announce the revamped SS20 sloping subsill. The main improvement comes in the form of laser cut aluminium end caps, which are screwed into the subsill and provide an excellent level of strength.



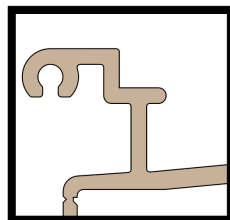
**SS20** Subsill  
Fitted with **PX0040** sill baffle and **PX0644** bulb seal



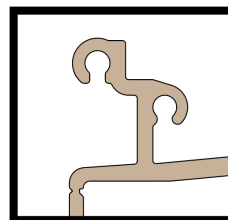
Fitment of the **ECD-120** end cap

Once the ECD-120 end cap is screwed into the SS21, it must also be caulked to provide adequate sealing.

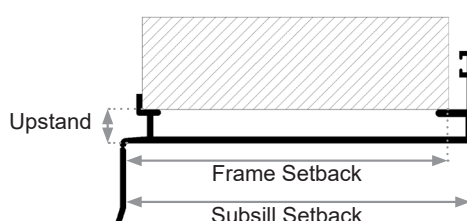
Some minor other tweaks were also made to the SS20, including reducing the distance that the sill baffle section protrudes from the subsill. In some instances it is possible that the external lip is visible when looking from the side, so this has now been reduced. The new end caps also fully cover the external lips, giving a much cleaner finish.



Old design



New design



### SS20 Sloped Subsill

Upstand: 13mm

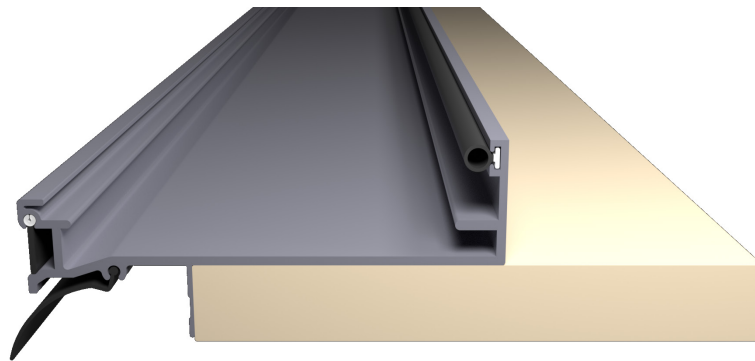
Frame setback: 107.2mm

Subsill Setback: 113.2mm

# SS21 SUBSILL WITH REVEAL ADAPTER

## Premium residential 110mm Subsill

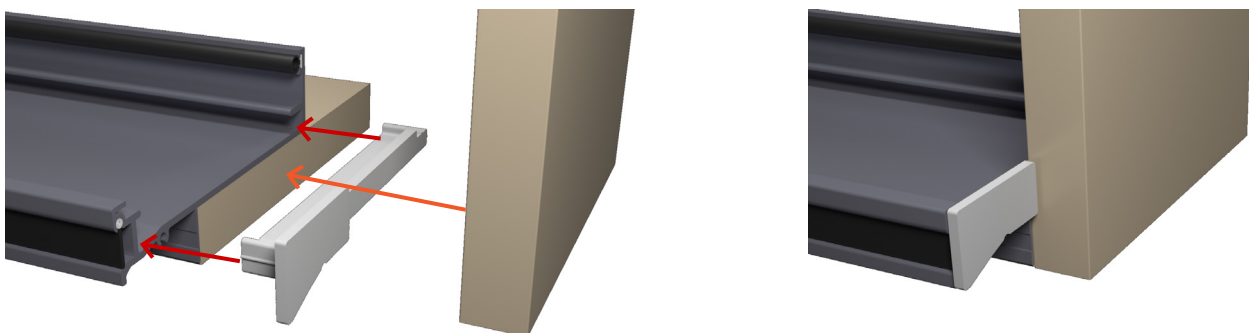
Concept Architectural Systems is proud to announce the SS21 sloping subsill, now available with injection moulded end caps. The caps fit inside the subsill and allow the timber reveal to fit over the top of them.



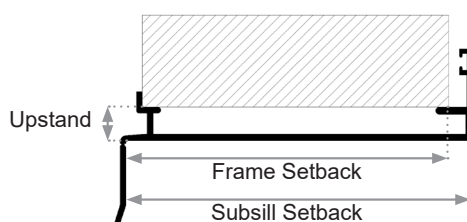
**SS21** Subsill

Fitted with **PX0040** sill baffle, **PX0644** bulb seal, **PF0628** sill flap and timber reveal

The EC21 end cap simply pushes into the SS21 subsill, and must also be caulked to provide adequate sealing. Once it is fitted, timber reveals can be fitted over the top of it.



Fitment of the **EC21** end cap



### SS21 Sloped Subsill

Upstand: 11mm

Frame setback: 104.8mm

Subsill Setback: 110.8mm