

Aluminium Building Products Range



Supplying a wide selection of premium finishes and flexible customisation options to bring your creative visions to life

Using durable and efficient Aluminium extrusions to create systems to compliment any residential or commercial build



Introducing AluSPAN



AluSPAN is Concept Aluminium Systems aluminium building products range, designed to bring the creative visions of architects, builders, and homeowners to life. Developed in consultation with Australian designers and extruded in Australia, each product is engineered to deliver high performance, functionality, and aesthetic appeal for both residential and commercial applications.

The range offers versatile architectural solutions including wall battens, fencing, shading, and more, with a wide selection of sizes, configurations, and finishes to achieve your desired look. AluSPAN expands on our commitment to creating Australian homes that are more comfortable, functional, and built for living, combining durability, style, and versatility to enhance architectural appeal while providing practical solutions for shading, privacy, and outdoor spaces.

All AluSPAN products are independently tested in our on-site NATA-accredited facility to ensure compliance with Australian Standards and long-lasting performance.





External Battens

The CAS External Battens offer exceptional design flexibility, making them ideal for a wide range of applications including fencing, window privacy screens, and full facade installations. Commonly featured in architecturally designed homes, aluminium battens create a clean, continuous line detail that enhances the texture, rhythm, and visual appeal of any exterior.

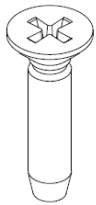
Lightweight and simple to install, the system uses an efficient two-step assembly process for a convenient and reliable installation. Aluminium construction ensures long-term durability with minimal maintenance required. To customise the system to your project, you can select from our full range of powder-coat finishes, natural anodising, or 39 luxurious Atwood Wood Finishes for a realistic timber appearance.

Our five standard batten sizes all use the same base and counter-sunk screw for superior strength and ease of specification. The Slim Line Batten System features its own dedicated base and screw design, also utilising counter-sunk screws to deliver lasting structural performance.

External Batten Profiles and Hardware

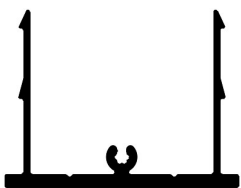


*Please note that all end caps can be powder coated to match the battens, and each are sold separately.

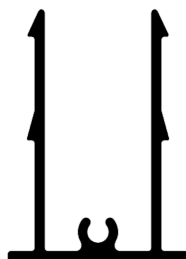


**Counter Sunk
Screw**
6g x 25mm

**Batten Base
BTB**



**25mm Batten Base
BT26**



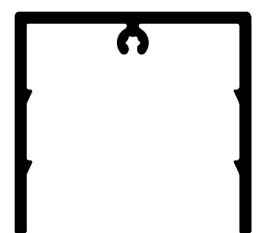
**25mm Batten
BT47**
6500mm



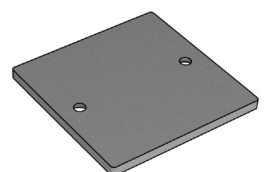
**25mm End Cap
ECB-47**
Pack Size: 1



**50mm Batten
BT50**
6500mm



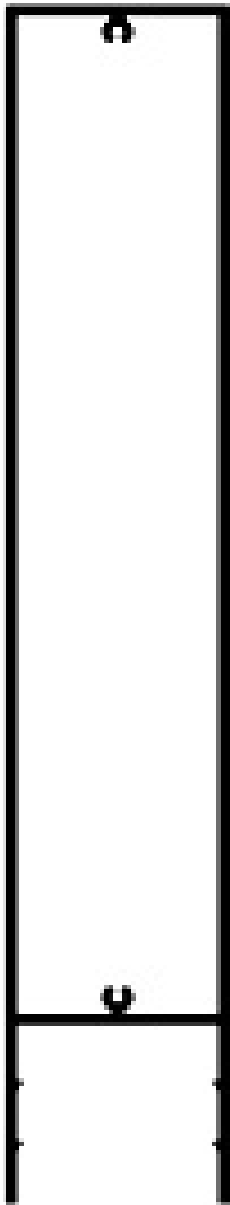
**50mm End Cap
ECB-50**
Pack Size: 1



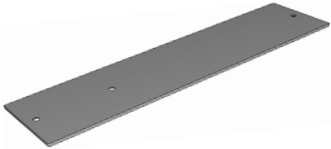
External Batten Profiles and Hardware



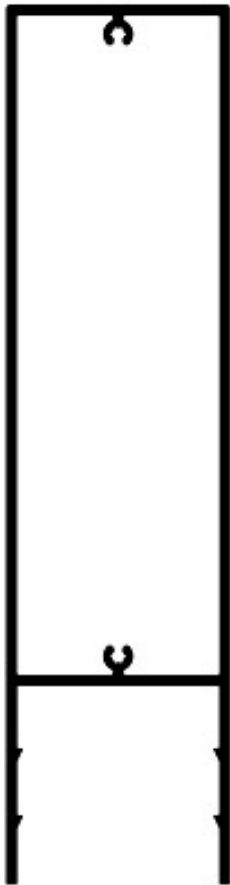
300mm Batten
BT300
6500mm



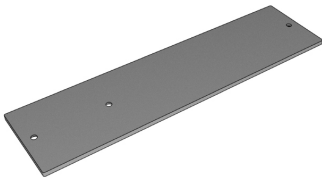
300mm End Cap
ECB-300
Pack Size: 1



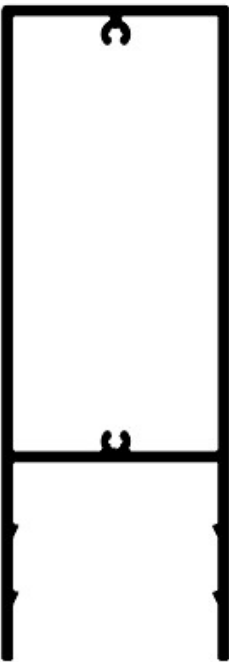
200mm Batten
BT200
6500mm



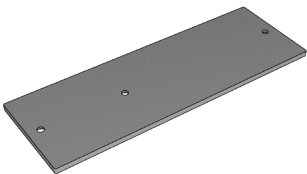
200mm End Cap
ECB-200
Pack Size: 1



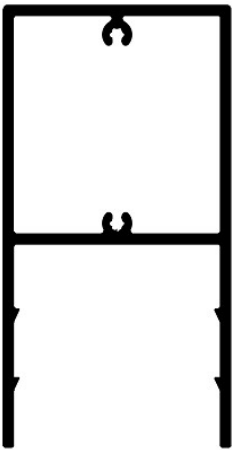
150mm Batten
BT150
6500mm



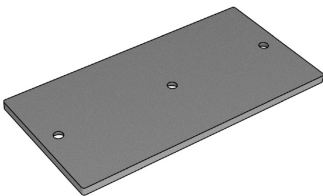
150mm End Cap
ECB-150
Pack Size: 1



100mm Batten
BT100
6500mm



100mm End Cap
ECB-100
Pack Size: 1

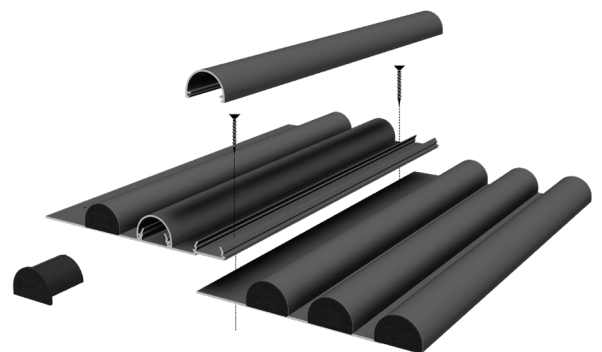


150mm Wall Battens With Screw and Clip On Design



Our 150mm wall battens imitate the installation of cladding, where the base plate is screwed onto the wall, and the battens are clipped on. This makes for an efficient installation process that will save you time during assembly and allow you to run battens across an entire wall with ease. Example applications for this system include feature walls or facades, partial wainscoting, and panel doors. This system is extremely flexible and can be used on internal and external walls, or any flat surface. We offer rounded or square shapes that can run both vertically and horizontally, providing you with the flexibility to achieve your desired aesthetic.

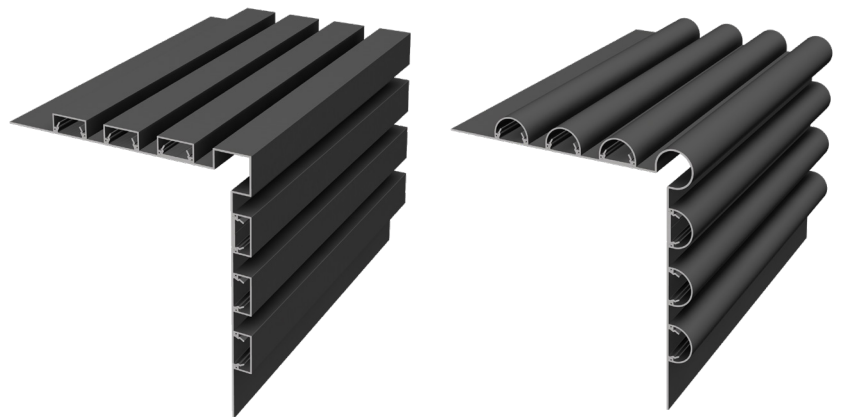
With its balance of efficiency, durability, and design flexibility, the 150mm batten system provides a refined solution for enhancing walls and flat surfaces in residential or commercial projects.



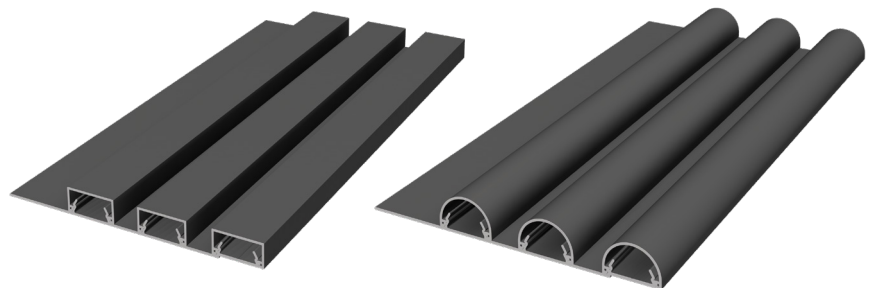
Versatile Design Applications for Interior and External Spaces.

- Suitable for inwards and outwards facing corners.
- Clean finish with hidden installation details including end caps.
- Battens can be powder coated in our full colour range, or wood grain finishes.
- Versatile systems that can be used for various spaces and design applications.

Round and Square end caps battens when wrapped around a wall corner.



Round vs Square batten options to suit your preference.



150mm Wall Batten Profiles and Hardware



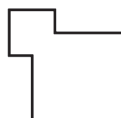
Profiles



3 Base Wall Batten Base
WB30
Length: 6000



Wall Batten Square Inwards Corner
WB33
Length: 6000



Wall Batten Square Outward Corner
WB31
Length: 6000



Wall Batten Square Cap
WB35
Length: 6000



Wall Mounted Round Inward Corner
WB34
Length: 6000



Wall Batten Round Outward Corner
WB32
Length: 6000



Wall Batten Round Cap
WB36
Length: 6000

Hardware



End Cap to suit WB35
EC35
200 per bag



End Cap to suit WB36
EC36
200 per bag

Post and Rail Fencing



Our new aluminium Post and Rail Fencing is built for the demands of farms and large properties, providing a strong, long-lasting alternative to traditional timber or steel. Supplied in easy-to-assemble kit form, the CAS Post and Rail system is designed for fast installation across long boundary lines.

By choosing aluminium over traditional fencing materials, you avoid issues like rusting, rotting, and warping, with only minimal maintenance required. This makes it ideal for paddocks, livestock zones, and property perimeters. With custom sizes available and a wide range of durable powder-coat colours to choose from, you have complete design flexibility to achieve your desired look, knowing your fence is built to last. To view our Post and Rail Fencing profiles, please contact our sales team.





17 Broadfield Rd Broadmeadows VIC 3047

03 9357 2888

www.conceptaluminium.com.au

