

# Aluminium Building Products Range



Supplying a wide selection of premium finishes and flexible customisation options to bring your creative visions to life

Using durable and efficient Aluminium extrusions to create systems to compliment any residential or commercial build



# Introducing AluSPAN



AluSPAN is Concept Aluminium Systems aluminium building products range, designed to bring the creative visions of architects, builders, and homeowners to life. Developed in consultation with Australian designers and extruded in Australia, each product is engineered to deliver high performance, functionality, and aesthetic appeal for both residential and commercial applications.

The range offers versatile architectural solutions including wall battens, fencing, shading, and more, with a wide selection of sizes, configurations, and finishes to achieve your desired look. AluSPAN expands on our commitment to creating Australian homes that are more comfortable, functional, and built for living, combining durability, style, and versatility to enhance architectural appeal while providing practical solutions for shading, privacy, and outdoor spaces.

All AluSPAN products are independently tested in our on-site NATA-accredited facility to ensure compliance with Australian Standards and long-lasting performance.



# Contents

- 4 Strata Battens System
- 7 Nova Wall Battens
- 10 Atlas Privacy Screening
- 12 Post and Rail Fencing
- 13 Louvres

# Strata Battens System



The AluSPAN Strata Batten System delivers a refined, architectural solution for a wide range of applications, from fencing and window privacy screening to full building facades, as well as commercial uses including external fins and internal partitions. Designed to create clean, consistent lines, the system enhances depth, texture, and rhythm across both residential and commercial environments.

When used for sun shading or privacy screening, Strata Battens can also contribute to improved energy efficiency by reducing direct solar heat gain, helping to achieve more stable internal temperatures. The Strata Battens System consists of a base, batten, and end cap, working together to conceal fixings and achieve a clean, seamless finish.

Lightweight and engineered for efficiency, Strata Battens utilise a simple two-step assembly process, ensuring convenient and reliable installation. Manufactured from aluminium, the system offers long-term durability with minimal maintenance required. To suit any project, Strata Battens are available in a full range of powder coat finishes, natural anodising, or 39 Atwood Wood Finishes for a realistic timber appearance with the performance.

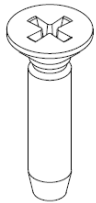
The Strata Battens System is available in 5 standard sizes which all share a common base and countersunk screw for streamlined specification and consistent structural performance. A Slim Line Batten is also available and features its own dedicated base and counter sunk fixings for a refined, high-performance finish.



# Strata Battens System Profiles and Hardware

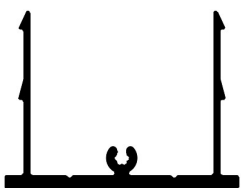


\*Please note that all aluminium end caps can be powder coated to match the battens and base, and each are sold separately.

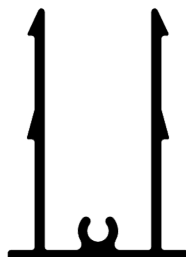


**Counter Sunk  
Screw**  
6g x 25mm

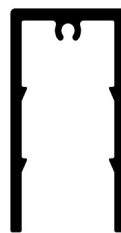
**Batten Base  
BTB**



**25mm Batten Base  
BT26**



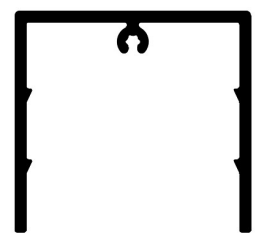
**25mm Batten  
BT47**  
6500mm



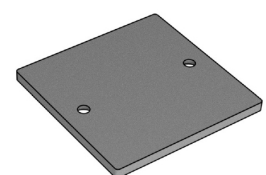
**25mm End Cap  
ECB-47**  
Pack Size: 1



**50mm Batten  
BT50**  
6500mm



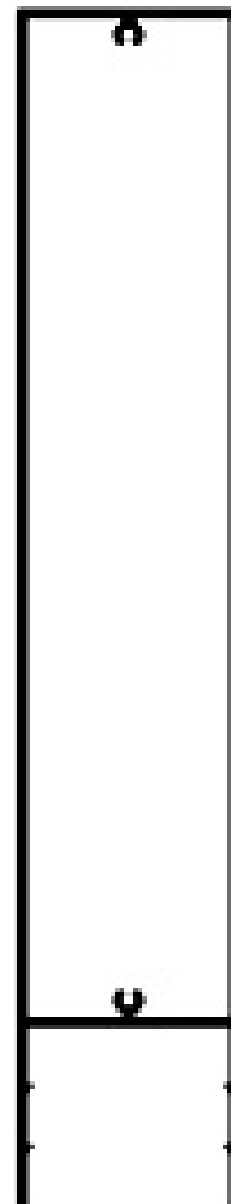
**50mm End Cap  
ECB-50**  
Pack Size: 1



# Strata Battens System Profiles and Hardware



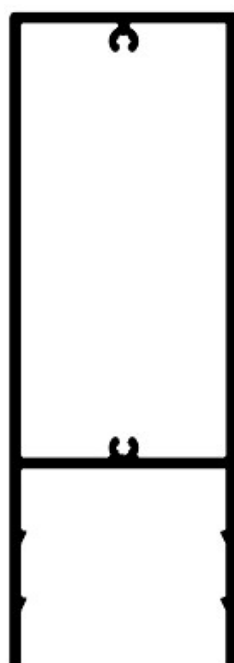
300mm Batten  
**BT300**  
6500mm



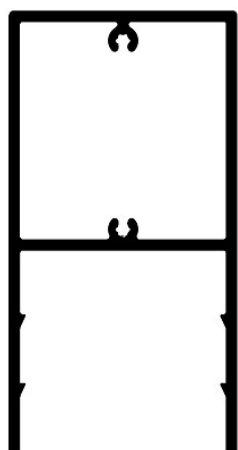
200mm Batten  
**BT200**  
6500mm



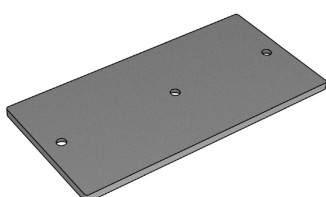
150mm Batten  
**BT150**  
6500mm



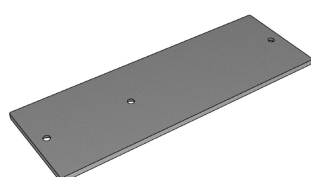
100mm Batten  
**BT100**  
6500mm



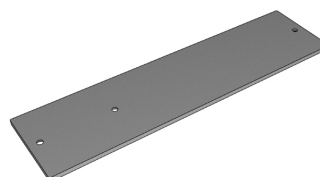
100mm End Cap  
**ECB-100**  
Pack Size: 1



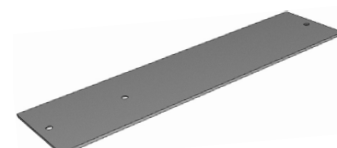
150mm End Cap  
**ECB-150**  
Pack Size: 1



200mm End Cap  
**ECB-200**  
Pack Size: 1



300mm End Cap  
**ECB-300**  
Pack Size: 1



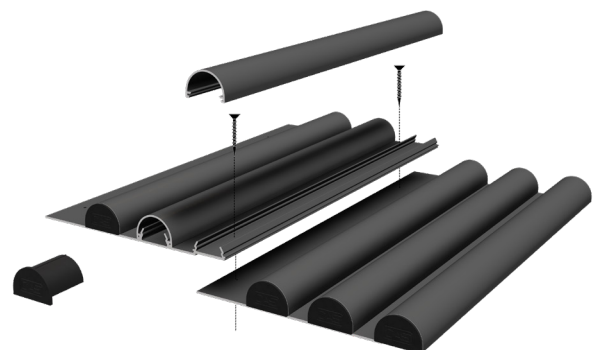
# Nova Wall Battens



The AluSPAN Nova Wall Battens are 150mm and imitate the installation of cladding, where the base plate is screwed onto the wall, and the battens are clipped on. This makes for an efficient installation process that will save you time during assembly and allow you to run battens across an entire wall with ease.

Example applications for this system include feature walls or facades, partial wainscoting, and panel doors for residential or commercial projects. Nova Wall Battens are extremely flexible and can be used on internal and external walls, or any flat surface. To offer full design flexibility we offer rounded or square shaped battens that can run both vertically and horizontally, providing you with the flexibility to achieve your desired aesthetic.

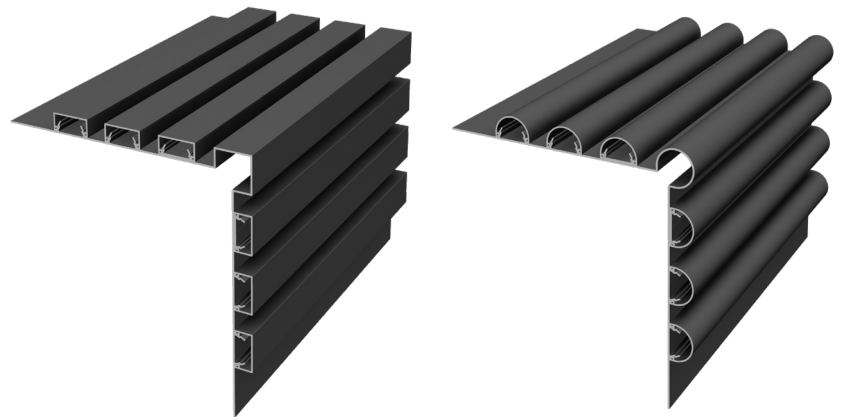
With there balance of efficiency, durability, and design flexibility, the Nova Wall Batten System provides a refined solution for enhancing walls and flat surfaces in a variety of project applications.



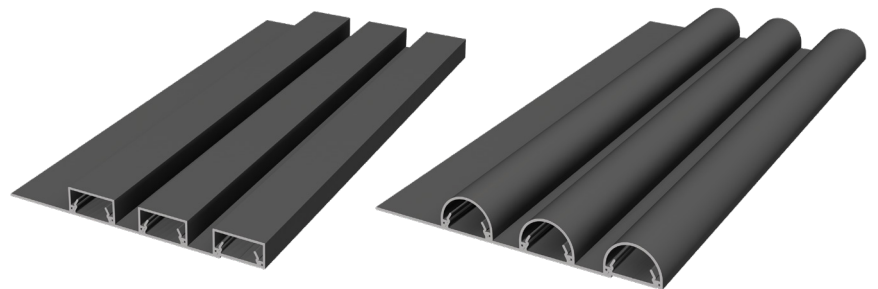
# Versatile Design Applications for Interior and External Spaces

- Nova Wall Battens are suitable for inwards and outwards facing corners, allowing for seamless integration around building edges and architectural features while maintaining clean lines and consistent spacing.
- Supplied with add-on end caps for a clean, refined finish with hidden installation details.
- Battens can be powder coated in our full colour range, or wood grain finishes.
- Versatile systems that can be used for various residential and commercial spaces and design applications.

Round and Square Nova Wall Battens when wrapped around a wall corner.



Round vs Square Nova Wall Batten options to suit your preference.



# Nova Wall Battens Profiles and Hardware



## Profiles

---



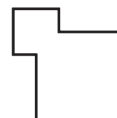
**3 Base Nova Wall Batten Base**  
WB30  
Length: 6000



**Single Nova Wall Batten Base**  
WB39  
Length: 6000



**Nova Wall Batten Square Inwards Corner**  
WB33  
Length: 6000



**Nova Wall Batten Square Outward Corner**  
WB31  
Length: 6000



**Nova Wall Batten Square Cap**  
WB35  
Length: 6000



**Nova Wall Mounted Round Inward Corner**  
WB34  
Length: 6000



**Nova Wall Batten Round Outward Corner**  
WB32  
Length: 6000



**Nova Wall Batten Round Cap**  
WB36  
Length: 6000

## Hardware

---



**End Cap to suit WB35**  
EC35  
200 per bag



**End Cap to suit WB36**  
EC36  
200 per bag

# Atlas Privacy Screening



The AluSPAN Atlas Privacy Screening System is a versatile addition to the AluSPAN range, designed to meet council requirements for visual screening in residential and commercial projects. Atlas Privacy Screens can also be utilised for sun shading as they help to reduce direct solar exposure to windows, contributing to improved energy efficiency, while doubling as a refined facade feature for architectural projects.

All components of the Atlas Privacy Screening System come pre-machined, ensuring fast and accurate assembly. Designed with installation flexibility in mind, the system can be fixed directly to the window frame for streamlined integration, or mounted onto the building structure to suit a broader range of project requirements and facade conditions.



# Atlas Privacy Screening Profiles



## Profiles

---



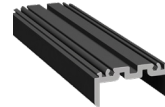
**Support Plate**  
ECD2  
Sold individually



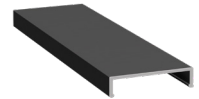
**End Cap**  
ECD6  
Sold individually



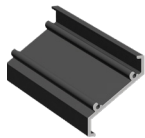
**44mm Post**  
EPS1  
1 meter length  
\*pre machined



**Male Blade Support**  
ESP3  
4m length  
\*pre machined holes left  
& right



**Female Blade Support**  
EPS4  
4 meters length



**Privacy Screen Blade**  
EPS6  
4 meters length

# Post and Rail Fencing



Our new aluminium Post and Rail Fencing is built for the demands of farms and large properties, providing a strong, long-lasting alternative to traditional timber or steel. Supplied in easy-to-assemble kit form, the CAS Post and Rail Fencing system is designed for fast installation across long boundary lines.

By choosing aluminium over traditional fencing materials, you avoid issues like rusting, rotting, and warping, with only minimal maintenance required. This makes it ideal for paddocks, livestock zones, and property perimeters. With custom sizes available and a wide range of durable powder-coat colours to choose from, you have complete design flexibility to achieve your desired look, knowing your fence is built to last.

To view our Post and Rail Fencing profiles, please contact our friendly sales team at [sales@conceptaluminium.com.au](mailto:sales@conceptaluminium.com.au) or (03) 9357 2888

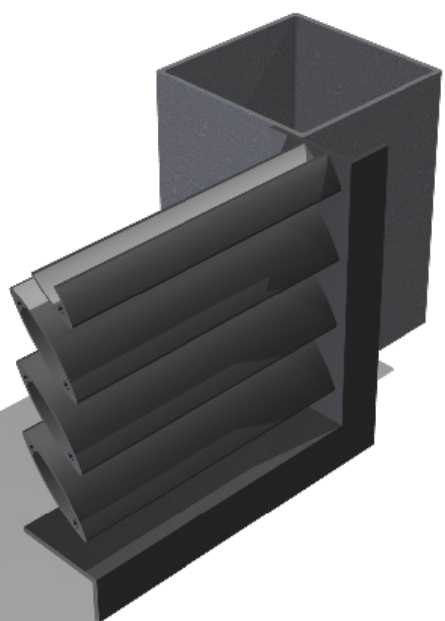
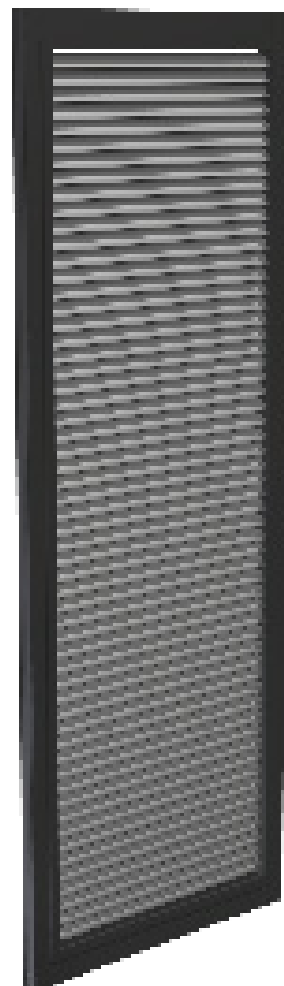


# Louvres



AluSPAN Louvres offer a sleek, durable solution for controlling light, airflow, and privacy. AluSPAN Louvres can also be used for decorative features including facades and partitions. Engineered from high-quality aluminium, AluSPAN louvres provide long-term performance with minimal maintenance, while their versatile design allows seamless integration into a variety of projects. During installation you have flexibility to insert the panels between the posts, or directly into the frames, depending on your installation requirements.

AluSPAN louvres also positively contribute to improved energy efficiency by reducing solar heat gain through windows, and allowing natural ventilation which helps to maintain stable internal temperatures. This can help decrease reliance on mechanical cooling and improve overall comfort within your home. Available in a range of profiles, sizes, and finishes including powder coating and anodising, our louvres are an outstanding choice for both residential and commercial projects.



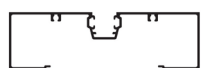
Insert panel between posts or into the frame

# Louver Profiles



## Profiles

---



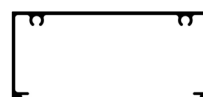
**150mm S/G Frame**  
CA600  
Length: 6500



**100mm Flat Jamb**  
CAD163  
Length: 6500



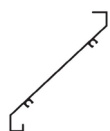
**Frame Pocket Filler**  
CA409  
Length: 6500



**100mm Plain Frame**  
CA437  
Length: 6500



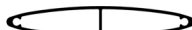
**75mm Louvre Blade**  
CL108  
Length: 6500



**100mm Louvre Blade**  
CL102  
Length: 6500



**60mm Ellipsoid Louvre Blade**  
EB60  
Length: 6500



**80mm Ellipsoid Louvre Blade**  
EB80  
Length: 6500



**100mm Ellipsoid Louvre Blade**  
EB100  
Length: 6500



**150mm Ellipsoid Louvre Blade**  
EB150  
Length: 6500



**175mm Ellipsoid Louvre Blade**  
EB175  
Length: 6500



**20mm x 20mm x 1.6mm Channel**  
C202016  
Length: 6500



The AluSPAN Building Products range is proudly Australian Made and uses locally sourced and manufactured Aluminium.

[conceptaluminium.com.au](http://conceptaluminium.com.au)

17 Broadfield Rd, Broadmeadows VIC 3047 | ABN: 97007214897 | 9357 2888 | March 2026